

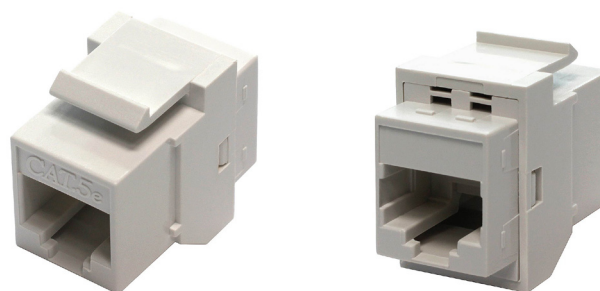
RJ45 CAT5E F/F COUPLER KEYSTONE JACK

SKUS

FA-661D (Black)
FA-661W (White)

FEATURES

- Category 5E In-line RJ45 Keystone Coupler (8P8C)
16.3 x 28.0 x 23.3mm
- Use to connect two unshielded, pre-terminated RJ45 Category 5E Ethernet cables
- Tool-less snap in for use with standard sized wall plate or patch panel
- Meets or exceeds Cat5E EIA/TIA 568A/B standards



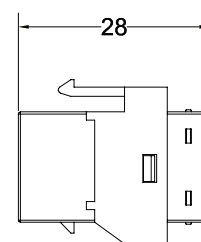
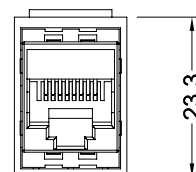
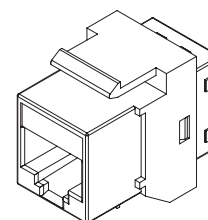
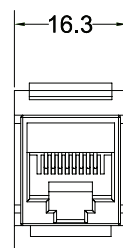
AVAILABLE COLOURS



SIZE (WxDxH) 16.3 x 28.0 x 23.3 mm

MATERIALS

BODY	Fireproof ABS UL-94V0
JACK	8P8C 50 Micro-inches gold plated
PCB	FR-4 / UL-94V0



SPECIFICATIONS

UL APPROVED 3P THIRD PARTY TESTED ROHS COMPLIANT		INSULATION RESISTANCE	500M ohms (min.)
MEETS C5E EIA/TIA 568A/B STANDARD CETLUS CERTIFIED		CONTACT RESISTANCE	20m ohms (max.)
JACK INSERTION CYCLE	Over 2000 Cycles (min.)	CURRENT RATING	1.5 Amps
OPERATION TEMPERATURE	-40 — +70 Degrees Celsius	DC RESISTANCE	0.1 ohms (max.)
TOLERANCE	X ± 1 .X ± 0.2 .XX ± 0.15	WITHSTANDING VOLTAGE	1000 VAC RMS @ 60Hz/1min

© PC Cable World. All rights reserved.

PC Cable World product specifications are subject to change without notice, but are accurate at the time of printing. Please contact a sales representative for a current specs. Please note that all physical specifications are nominal.

www.pccableworld.com