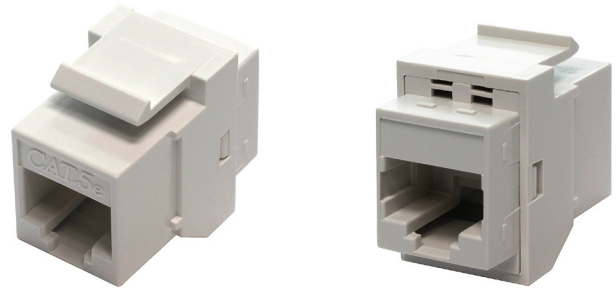


# RJ45 CAT5E F/F COUPLER KEYSTONE JACK

**SKUS** FA-661D (Black)  
FA-661W (White)



## FEATURES

- Category 5E In-line RJ45 Keystone Coupler (8P8C)  
16.3 x 28.0 x 23.3mm
- Use to connect two unshielded, pre-terminated RJ45 Category 5E Ethernet cables
- Tool-less snap in for use with standard sized wall plate or patch panel
- Meets or exceeds Cat5E EIA/TIA 568A/B standards

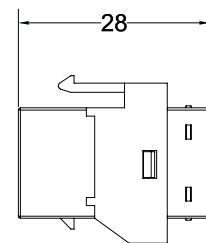
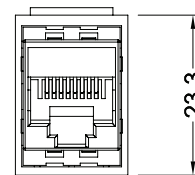
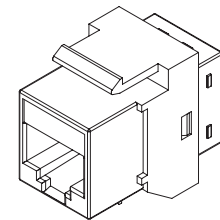
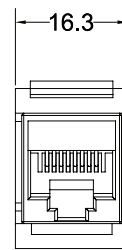
## AVAILABLE COLOURS



**SIZE (WxDxH)** 16.3 x 28.0 x 23.3 mm

## MATERIALS

<b>BODY</b>	Fireproof ABS UL-94V0
<b>JACK</b>	8P8C 50 Micro-inches gold plated
<b>PCB</b>	FR-4 / UL-94V0



## SPECIFICATIONS

<b>UL APPROVED   3P THIRD PARTY TESTED   ROHS COMPLIANT</b>	<b>INSULATION RESISTANCE</b>	500M ohms (min.)	
<b>MEETS C5E EIA/TIA 568A/B STANDARD   CETLUS CERTIFIED</b>	<b>CONTACT RESISTANCE</b>	20m ohms (max.)	
<b>JACK INSERTION CYCLE</b>	Over 2000 Cycles (min.)	<b>CURRENT RATING</b>	1.5 Amps
<b>OPERATION TEMPERATURE</b>	-40 — +70 Degrees Celsius	<b>DC RESISTANCE</b>	0.1 ohms (max.)
<b>TOLERANCE</b>	X ± 1   .X ± 0.2   .XX ± 0.15	<b>WITHSTANDING VOLTAGE</b>	1000 VAC RMS @ 60Hz/1min

© PC Cable World. All rights reserved.

PC Cable World product specifications are subject to change without notice, but are accurate at the time of printing. Please contact a sales representative for current specs. Please note that all physical specifications are nominal.

[www.pccableworld.com](http://www.pccableworld.com)